

Kimbāl Growth Story 2025-26

Helping India make accessible 'Efficient Energy Everywhere.'

As we conclude **FY 2025-26**, this quarter marks a step forward in our energy engineering; bringing intelligence closer to the edge and creating solutions that are more adaptive and responsive. Our expansion into new geographies reflects the trust we've earned and the direction we're headed.

As we look back on a year of steady growth, we remain grateful to our customers, partners, and Kimbalites who continue to shape this journey toward Efficient Energy Everywhere.

Q4 FY26 HIGHLIGHTS

New Office Inauguration in Guwahati

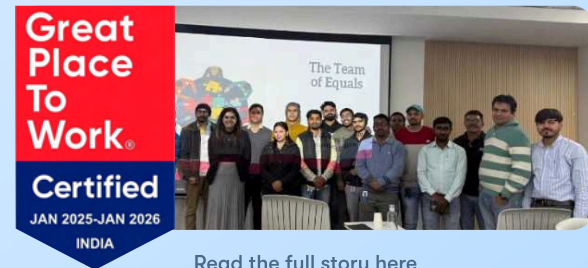
Returning to where we piloted 15,000 meters in 2015, our new Guwahati office strengthens our Northeast presence, ensuring faster, more responsive support for our regional utilities and partners.



[Read the full story here](#)

Three Years of Building a Great Place to Work – Mid-Size Category

For the third year in a row, Kimbal is Great Place to Work® Certified. At its core, this recognition comes from a culture where ownership is shared, every voice matters, and trust guides how we work every day.



[Read the full story here](#)



Recognition at Tata Power-DDL Business Associate Meet

We are humbled to receive this prestigious award from Tata Power-DDL at their Business Associate Meet 2025–26, recognising a strong partnership and the commitment of our Kimbalites.



[Read the full story here](#)

Smart Meter Pakhwada: Building Trust in Smart Metering

As part of government-led awareness efforts, Smart Meter Pakhwada focused on consumer awareness. Our team engaged communities across Himachal Pradesh and Gujarat, strengthening trust and enabling adoption.



[Read the full story here](#)



INDUSTRY REPRESENTATIONS & THOUGHT LEADERSHIP

EPR Power Talks: Stable Grid for Energy Transition

Santadyuti Samanta shared insights on the role of smart metering and data analytics in building a more stable, intelligent power grid.

12th India Smart Utility Week (ISUW) 2026

He also spoke on AMI 2.0, emphasising how bridging IT and OT enables proactive, real-time energy management.

[Read the full article here](#)

Santadyuti Samanta,
Leader Product & Solution
Management



CPRI Conference: Smart Grid & Cyber Security

Our COO, Deepak Pandey spoke on managing cyber risks in grid modernization. We also presented our research paper on modular smart grid system design.

[Read the full discussion here](#)

Deepak Pandey
Chief Operating Officer



26th Regulators & Policymakers Retreat: Smart Metering for a Responsive Distribution Sector

Our CBO, Gurpreet Oberoi highlighted how smart metering drives transparency and efficiency, helping regulators and policymakers build a more responsive, data-driven energy distribution ecosystem.

[Read more about the session](#)

Gurpreet Oberoi,
Chief Business Officer



Electrical & Power Info (EPI) Magazine Feature

In an interview with EPI, our CTO, Dave Lee, discussed the shift to predictive intelligence at the grid edge, highlighting how moving from traditional analytics to real-time data enables utilities to anticipate risks and act proactively.

[Read the full interview here](#)

Dave Lee,
Chief Technology Officer

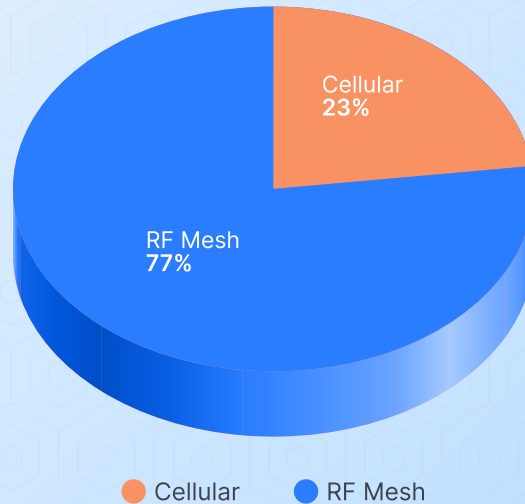


Thanks to our growth partners, customers, and Kimbalites
for helping us close the year on a strong note.

10 M+

Smart Meters supplied nationwide

Kimbal Mesh continues to power large-scale AMI deployments, driving strong adoption of reliable RF mesh networks.



NEW INDUSTRY ASSOCIATES & PROJECT COMMENCEMENTS

Welcoming new utility partners and industry associates as we expand our footprint across India.

New Utility Partnerships



PSPCL
(Punjab State Power Corporation Limited)



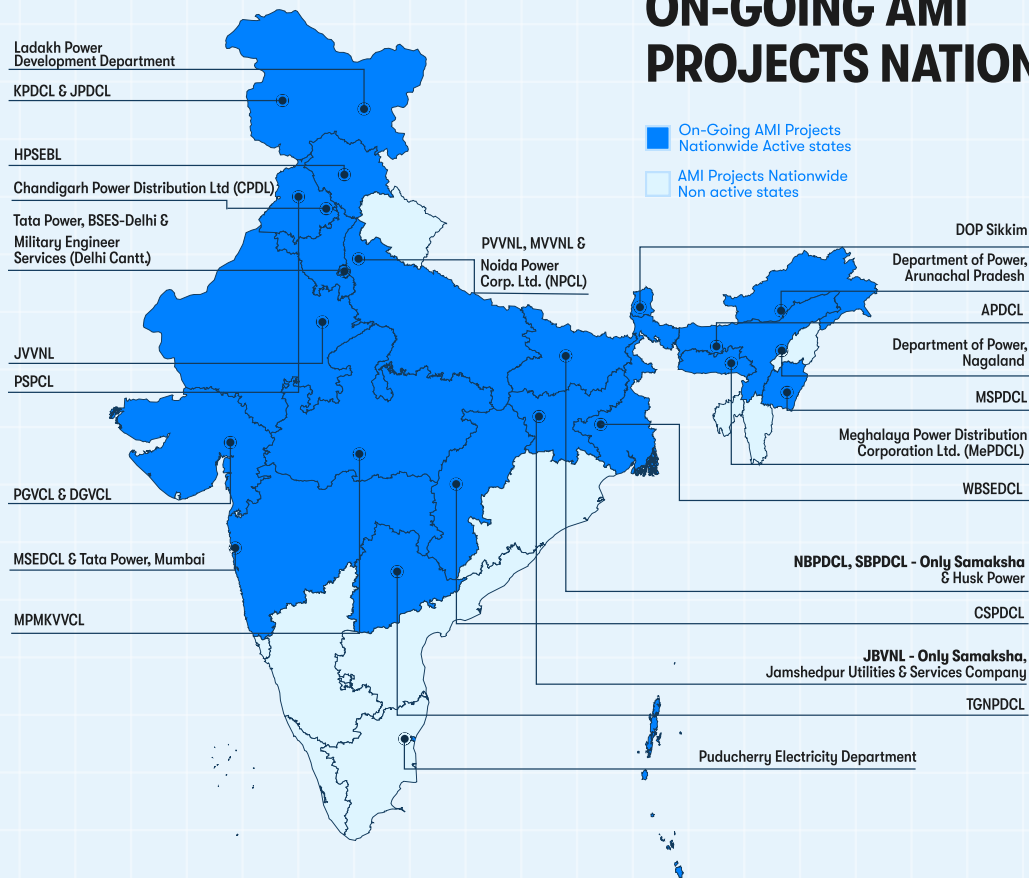
MePDCL (Meghalaya Power Distribution Corporation Limited)



BSES (Bombay Suburban Electric Supply)



ON-GOING AMI PROJECTS NATIONWIDE



INITIATIVES @KMP

Quality–Production Team Building Initiative

Organized 3-day cross-functional retreat to bridge the gap between our Production and Quality teams.



Bonding Through Action

The team participated in specialized task exercises designed to improve collective problem-solving and motivation.





KEY DEVELOPMENTS @KMP



Setting New Quality Standards

Our 99.6% quality performance rate is a direct result of precision process control.



Portfolio Expansion

Supplied HTCT 0.2S meters and onboarded Punjab utilities.



Smart Automation

Implemented packaging line automation to reduce manual handling & minimize human error.



Empowering Field Teams

Developed smart metering manuals and training materials to ensure CS teams are field-ready.

TRAINING | WORKSHOP | AUDITS @KMP

Performance Improvements

Reduced manual defects (414 to 54) and improved operator efficiency to 93.5%.

100% Gurukul-Trained Shop Floor

All operators trained through the 8-step “Gurukul” model in safety, quality, and maintenance before line deployment.



Global Compliance & Excellence

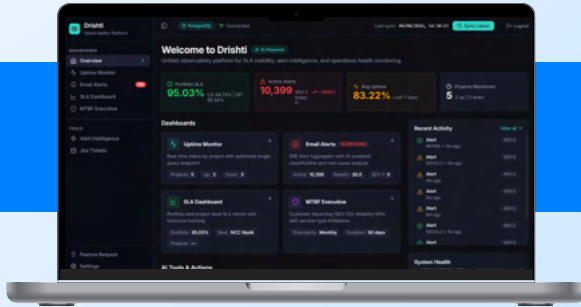
Cleared the NABL surveillance audit and conducted PPAP & APQP training for global partners.

Lean Six Sigma Black Belt Training (Batch 1)

Initiated in collaboration with the Indian Statistical Institute, Pune, to drive a continuous improvement culture.



ADVANCEMENT & UPGRADES DASHBOARD

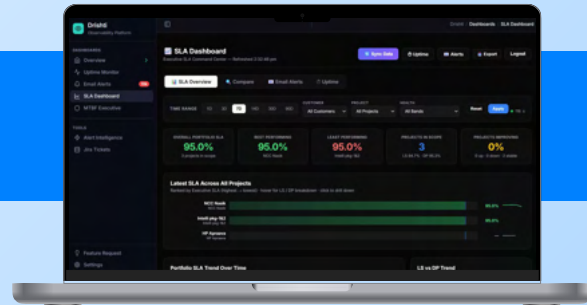


Observability Platform — Now Live

Launched a unified, AI-powered platform for real-time operational intelligence, with centralized SLA tracking, uptime monitoring, and alert management.

SLA Dashboard

Unified scoring, health indicators, and trend tracking now provide real-time visibility into service performance across all projects.



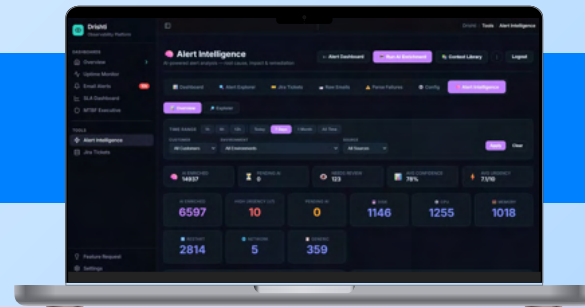


Centralized Uptime Console

Monitors uptime, MTBF, and system health instantly, reducing tool dependency and enabling faster issue identification.

AI-Powered Alert Monitoring

Analyses alerts for root cause, impact, and urgency, with AI-driven prioritisation and streamlined incident workflows.





PEOPLE & CULTURE OVERVIEW

Family Fete 2026: Celebrating the People Behind Our Journey

Acknowledging the families who empower the talent and dedication behind Kimbal.



K-Fit: Building a Values-Driven Hiring Culture

With K-Fit champions, ensuring every hire aligns with our culture & core values.



Own It Like a Boss: Leading with Ownership

Conducted a session on “Own It Like a Boss,” encouraging Kimbalites to take ownership, reflect, and grow as a team.





Lunar New Year in Kimbal's Singapore Design Centre

We marked the Chinese New Year with warmth and energy across our teams.
Wishing everyone good health and success in the year ahead.





Team of Equals: Where Every Voice Matters

Organized a workshop to strengthen openness and collaboration, enabling every Kimbalite to contribute meaningfully.



Prana Series: Supporting Well-Being on the Shop Floor

Focused on stress management, emotional awareness, and balance, helping the plant team stay resilient and focused.





CORPORATE SOCIAL RESPONSIBILITY

Continuing Our Journey toward Shiksha, Swasthya, and Samridhi initiatives under Project Kritya

Women's Day: Enabling Awareness and Well-Being

Through an interactive session at Surajpur School, we focused on menstrual hygiene and health awareness, supporting young girls with knowledge that empowers their everyday lives.



Cleanliness Drive and Dustbin Installation

Installed waste bins and organized sanitation drives to improve hygiene in public spaces.



Gifts for Women's Self-Help Groups

Distributed resources to local women's groups to support their entrepreneurial efforts and independence.





Winter Sweater Distribution

Provided warm sweaters to community members in need to ensure protection during the winter.



Kimbal Library Week

Promoted reading habits among students through curated book collections and interactive sessions.





We appreciate your interest in taking time to learn more about us.

Your suggestions and feedback are most welcome at happytohelp@kimbai.io

Namaste!

<https://kimbai.io/whats-new/>

